



naomi j ryan
estate agents



House - Detached



Bedrooms: 4



Bathrooms: 2



Receptions: 2



Heating: Gas



Parking: Yes



Garden: Yes

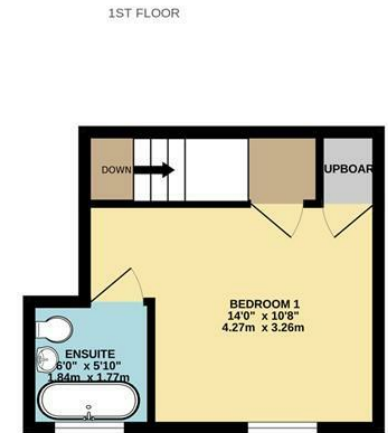
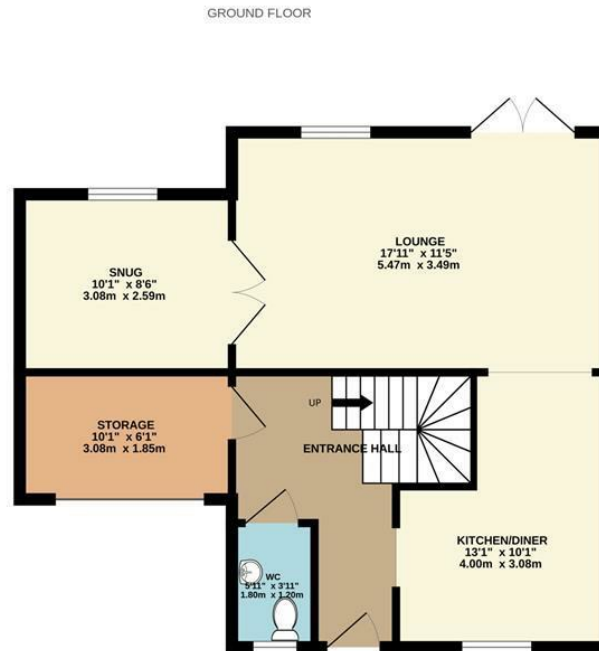
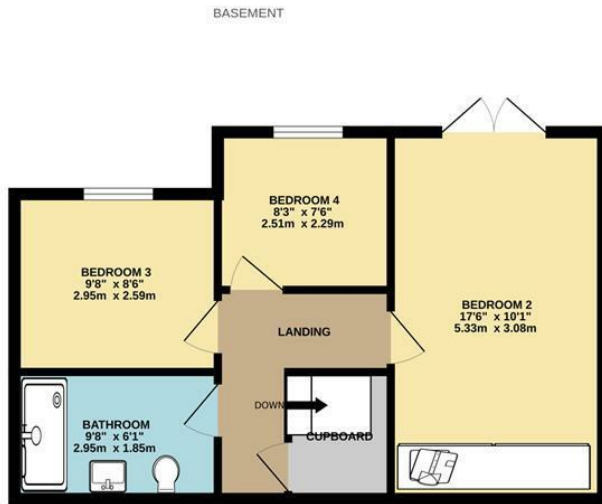


Council Tax Band: E

£1,750

Florida Drive,
, Exeter, EX4 5EX

www.naomijryan.co.uk



Whilst every attempt has been made to ensure the accuracy of the floorplan contained here, measurements of doors, windows, rooms and any other items are approximate and no responsibility is taken for any error, omission or mis-statement. This plan is for illustrative purposes only and should be used as such by any prospective purchaser. The services, systems and appliances shown have not been tested and no guarantee as to their operability or efficiency can be given.
Made with Metropix ©2026

SUMMARY

Nestled on the desirable Florida Drive in Exeter, this stunning detached house offers a perfect blend of modern living and comfort. Arranged over three spacious floors, the property boasts four generously sized bedrooms, making it an ideal family home.

The heart of the home is the beautifully designed open plan kitchen, living, dining area which is bathed in natural light from both the front and rear of the property. This inviting space is perfect for family gatherings and culinary adventures.

On this floor, you will also find a separate snug area, ideal for quiet evenings or as a playroom for children. The lower ground floor features three of the four bedrooms, along with a modern family shower room. Bedroom two offers direct access to the spacious and well maintained garden, allowing for a seamless indoor-outdoor living experience.

The master bedroom, located on the first floor, is a true sanctuary, complete with an ensuite bathroom for added convenience and privacy.

This property also includes parking for one vehicle, a valuable asset in this sought-after area. Its prime location ensures that you are close to a variety of amenities, well-regarded schools, and the Exeter university campus. The city centre is just a short distance away, and with local bus routes nearby, commuting is made easy.

In summary, this immaculate four-bedroom home on Florida Drive is a rare find, combining spacious living, modern amenities, and a fantastic location. It is perfect for families seeking a comfortable and stylish lifestyle in Exeter.

One pet considered with an additional pet rent of £25 per month.

Holding Deposit £403.



naomi j ryan
estate agents



